

**DIATONIC triads and broken chords in C, G, D, & A major keys**

TRIADS - root on bottom [use inversions for fingerings].

**C**

C = I      Dm = ii      Em = iii      F = IV      G = V      Am = vi

c-e-g      d-f-a      e-g-b      f-a-c      g-b-d      a-c-e

Broken chords - Each set of triad notes makes 4 different broken chords.

C = I      Dm = ii      Em = iii      F = IV      G = V      Am = vi

Alt. chords possible Cm Am Em D Bb F E C G Fm Dm Am Gm Em Bm A F C

TRIADS - root on bottom [use inversions for fingerings].

**G**

G = I      Am = ii      Bm = iii      C = IV      D = V      Em = vi

g-b-d      a-c-e      b-d-f#      c-e-g      d-f#-a      e-g-b

Broken chords - Each set of triad notes makes 4 different broken chords.

G = I      Am = ii      Bm = iii      C = IV      D = V      Em = vi

Alt. chords possible Gm Em Bm A F C B G D Cm Am Em Dm Bm F#m E C G

TRIADS - root on bottom [use inversions for fingerings].

**D**

D = I      Em = ii      F#m = iii      G = IV      A = V      Bm = vi

d-f#-a      e-g-b      f#-a-c#      g-b-d      a-c#-e      b-d-f#

*finish this yourself to help you remember it!*

Broken chords - Each set of triad notes makes 4 different broken chords.

Alt. chords possible

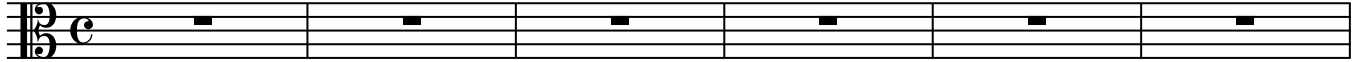
TRIADS - root on bottom [use inversions for fingerings].

**A**

Broken chords - Each set of triad notes makes 4 different broken chords.

Alt. chords possible

49



55

